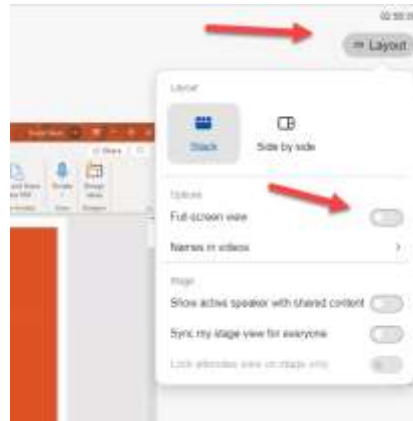
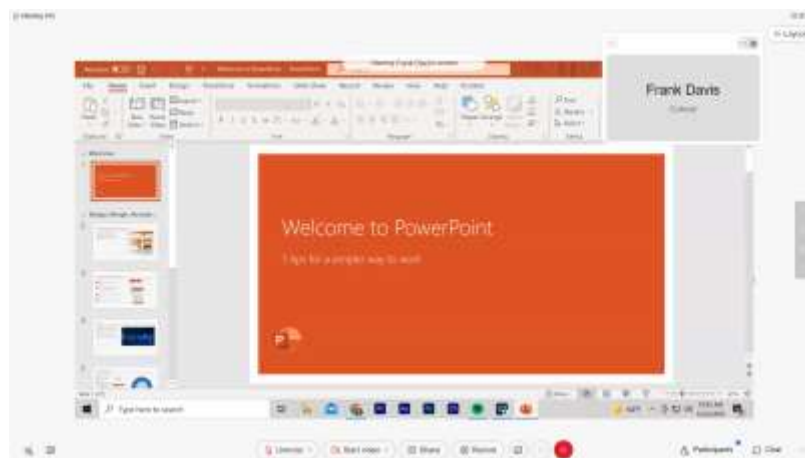


Tips for viewing in someone's screen in WebEx (Full screen) and the viewing toolbar through the Website

In order to go full screen, select the Layout button and select Full Screen. The Full Screen button will show the presenter's screen in full screen mode.



This is a full screen view. Note the location where the layout button has moved. It can be used to return to the previous view.



You can also use the tool bar to zoom in and out of the screen being shown.

