

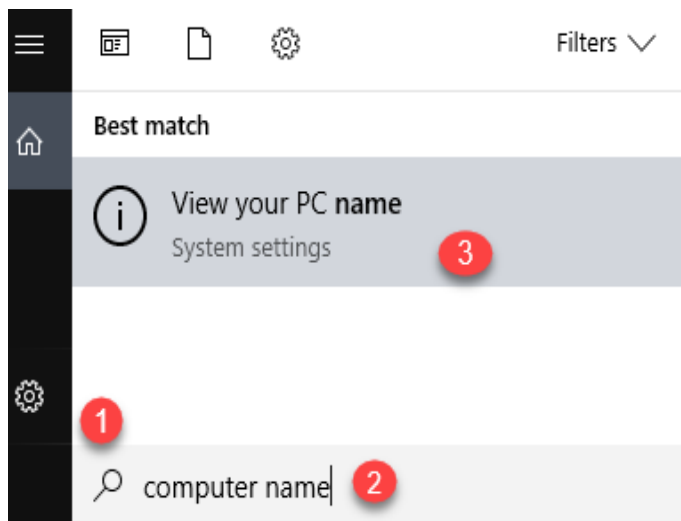
Windows Remote Desktop Protocol (**RDP**) allows you to connect to your work desktop from home.



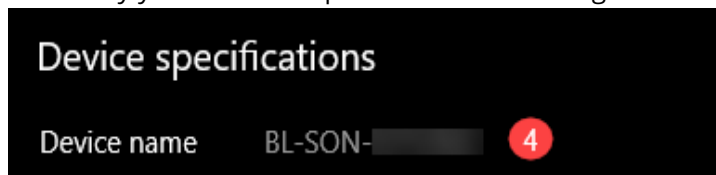
NOTE: You must first work with MSIT to turn on this feature. If your RDP feature is not enable already, put in an MSIT ticket. To expedite service, make sure to include your computer's name or MSIT tag number on your work computer. If RDP is enabled on your work computer, proceed to Part 2. Follow the steps below to locate your computer name:

PART 1: Locating Your Work Computer's Name

1. Click the Windows search icon.
2. Type "**computer name**" in the search box.
3. Select "**View Your PC name**".



4. Identify your work computer's name to the right of **Device name** and provide MSIT this information.



 **Reminder:** You will need to know your work computer's name when accessing your work desktop from home.

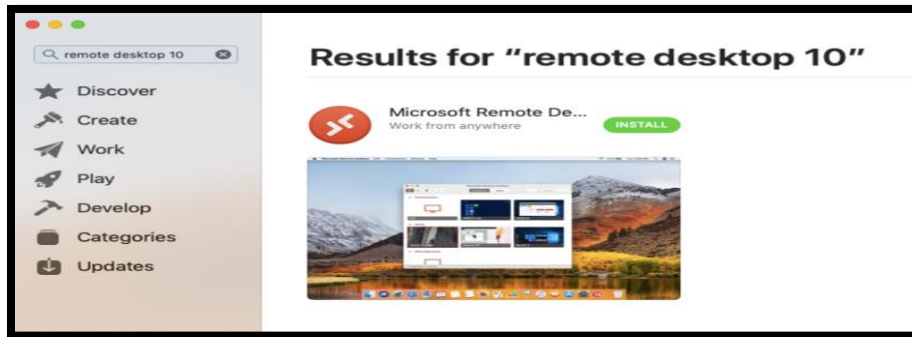
Once MSIT has confirmed RDP is enabled, you will have the ability to access your workstation from home.

Note: The work computer must remain powered on.

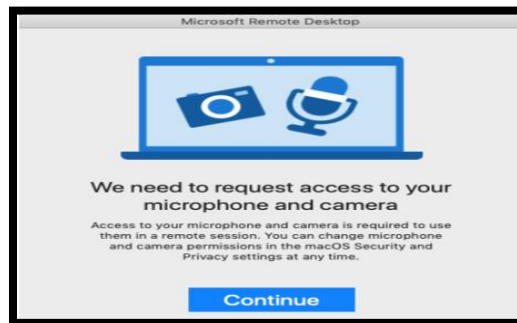
PART 2: Connecting to Your Work Computer from a Mac

Make a successful BIG-IP VPN client connection.

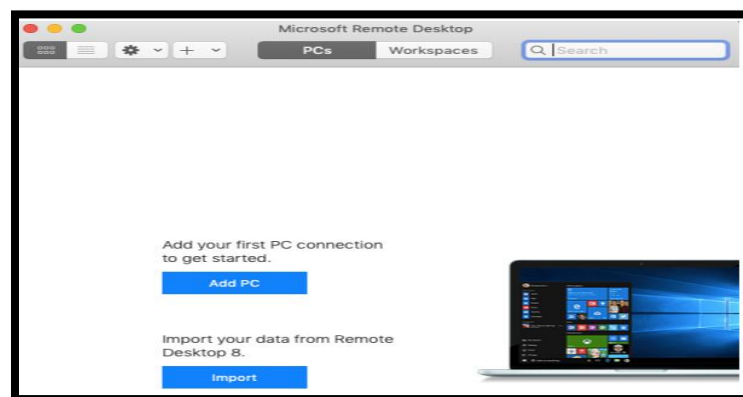
1. Download the free **"Remote Desktop 10"** application from the App Store and select Install.



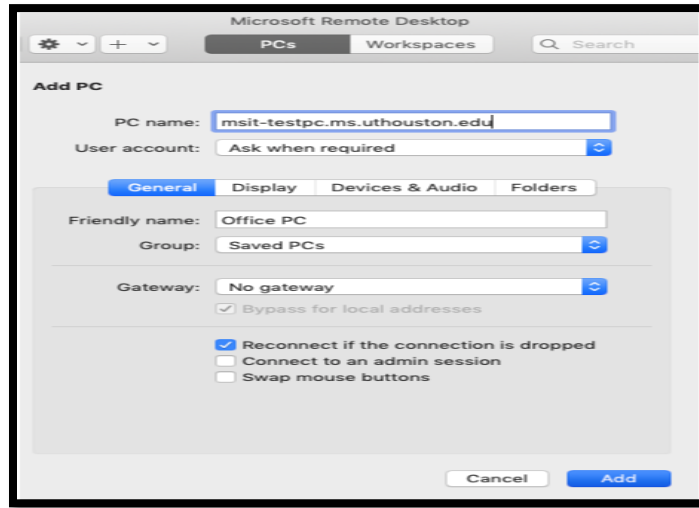
2. Select **Continue**.



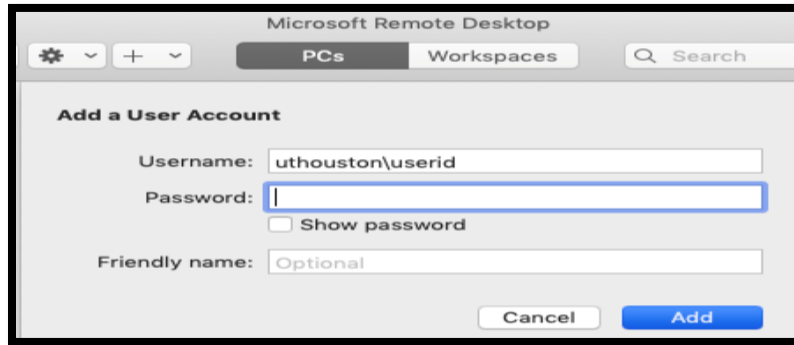
3. Once the Microsoft Remote Desktop application is installed, select **"Add PC"**. The PC information is what you identified in step 1 above. You can also place and MSIT ticket.



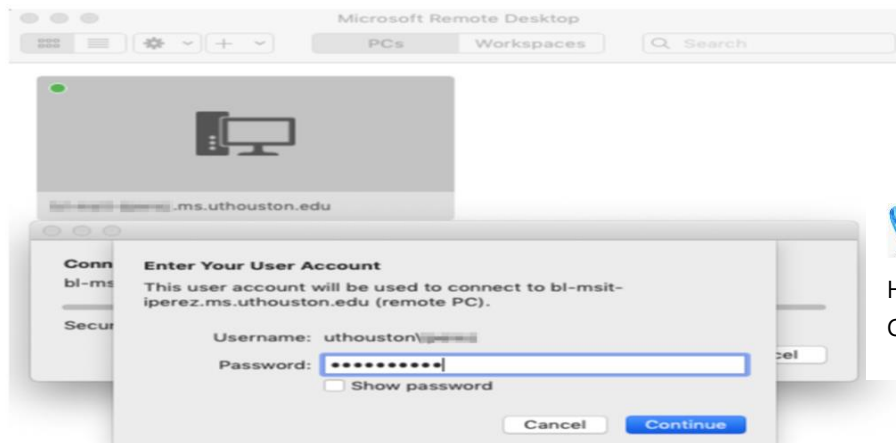
4. Enter the **PC name** (the name of your work computer).



5. Select User account and enter your UTHealth credentials (**uthouston\username**). Click on **Add** to save your computer name on the Remote Desktop list.



6. Select your office computer from the list in Remote Desktop and click **Continue**. When prompted, enter your UTHealth Credentials and click **Continue** again to access your work computer.



CONTACT

Helpdesk 713.486.4848
CEIRHelp@uth.tmc.edu