

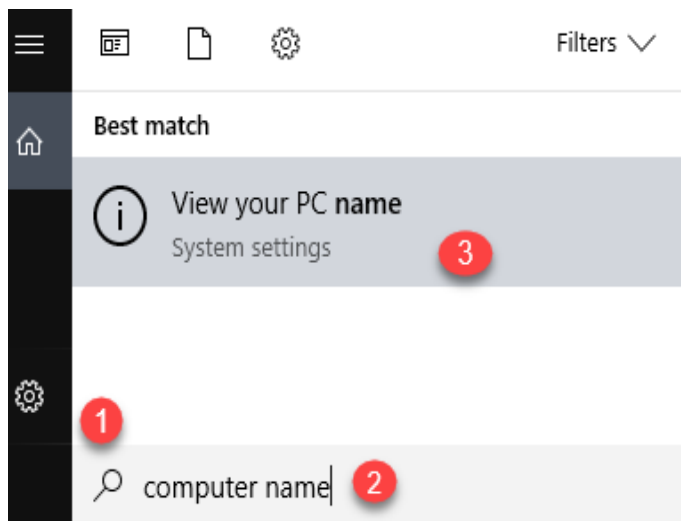
Windows Remote Desktop Protocol (**RDP**) allows you to connect to your work desktop from home.



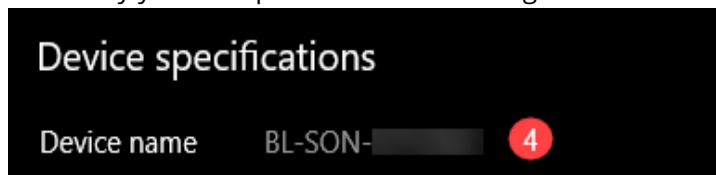
NOTE: You must first work with MSIT to turn on this feature. If your RDP feature is not enable already, put in an MSIT ticket. To expedite service, make sure to include your computer's name or MSIT tag number on your work computer. If RDP is enabled on your work computer, proceed to Part 2. Follow the steps below to locate your computer name:

PART 1: Locating Your Work Computer's Name

1. Click the Windows search icon.
2. Type "**computer name**" in the search box.
3. Select "**View Your PC name**".



4. Identify your computer's name to the right of **Device name** and provide MSIT this information.

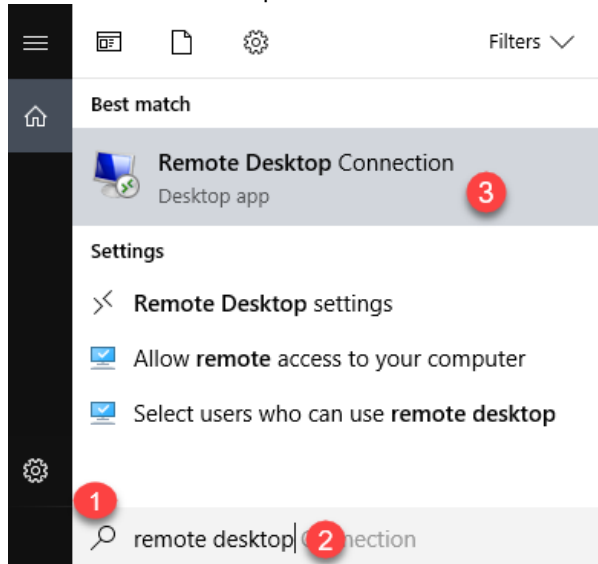


Once MSIT has confirmed RDP is enabled, you will have the ability to access your workstation from home.

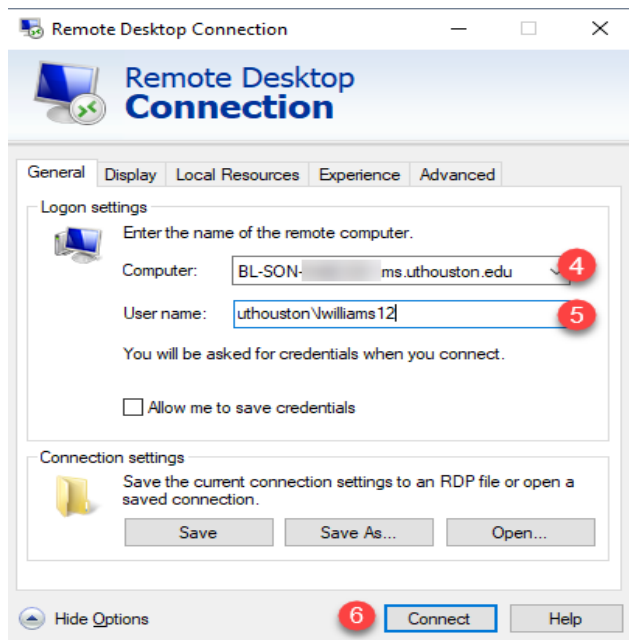
Note: The work computer must remain powered on.

PART 2: Connecting to Your Work Computer

1. Click the Windows search icon.
2. Type "**Remote Desktop Connection**" in the search box.
3. Click Remote Desktop Connection from the list.



4. On the **Remote Desktop Connection** screen, enter your work computer's name.
NOTE: Your computer's name should have **.ms.uthouston.edu** appended to it.
5. Enter your UTH username. (**uthouston\your username**).
6. Click the **Connect** button to gain access to your work computer.



CONTACT

Helpdesk 713.486.4848

CEIRHelp@uth.tmc.edu