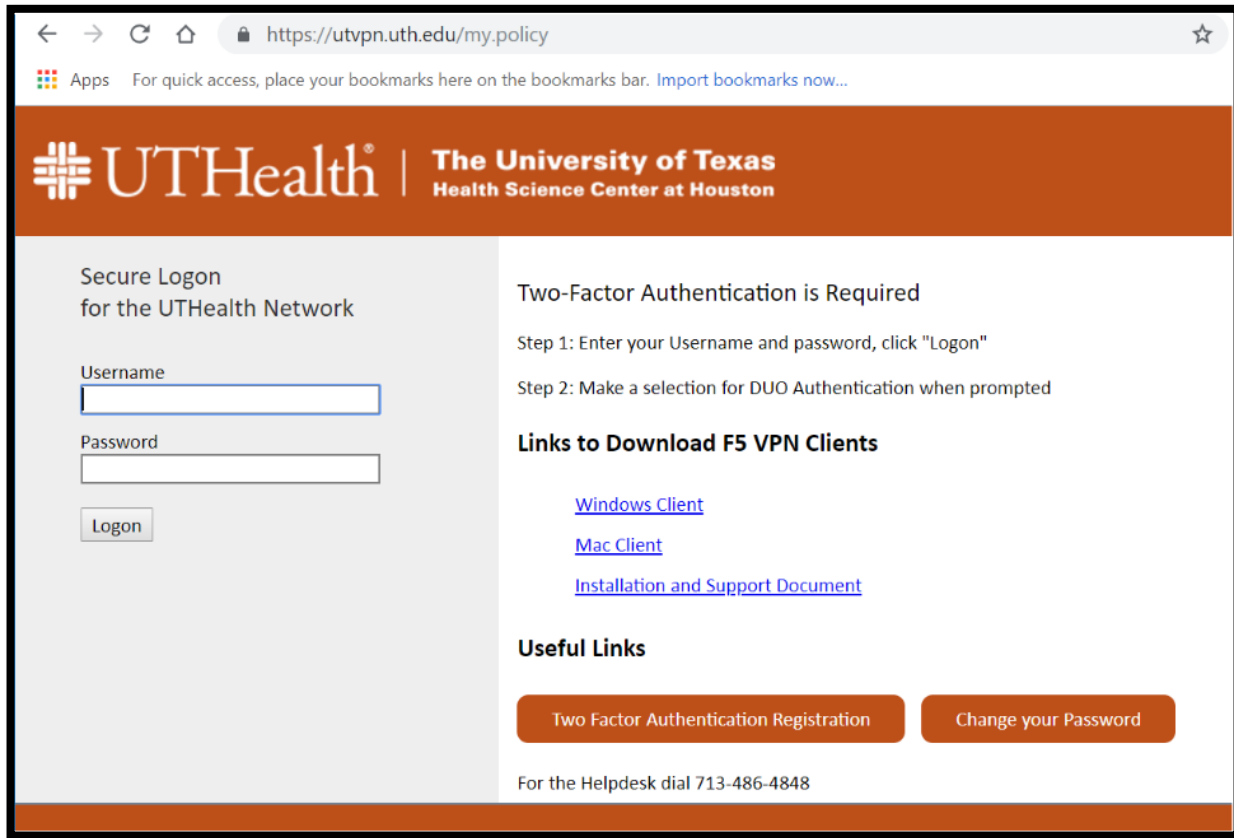
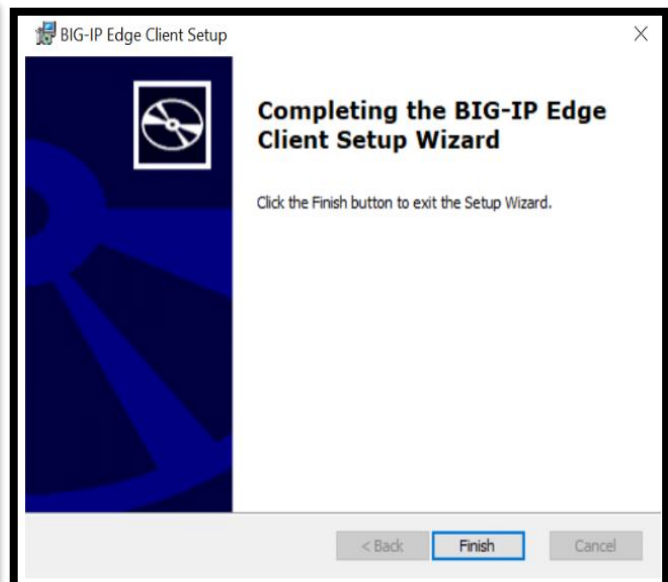
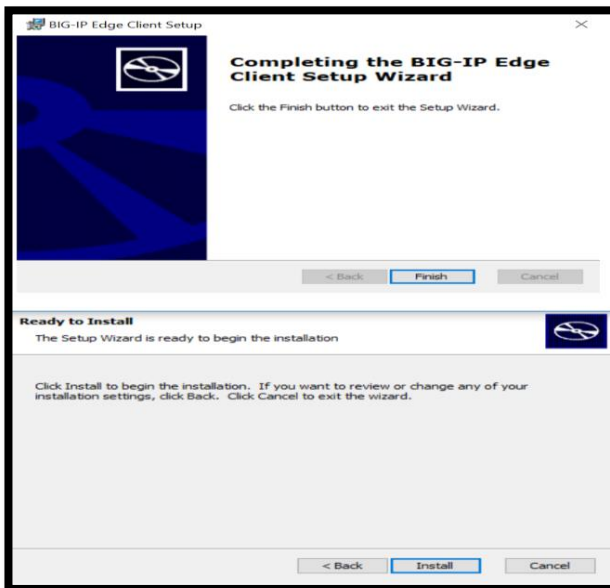


## PART 1: Install Big-IP VPN

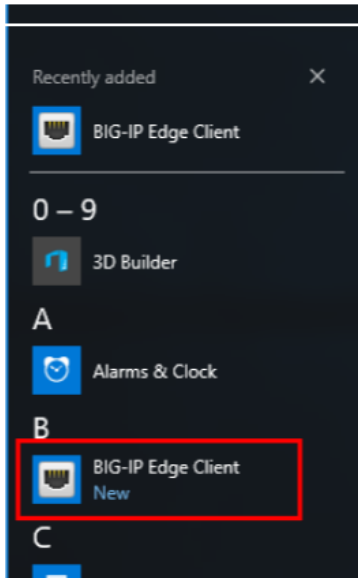
1. Go to: <https://utvpn.uth.edu/>
2. Click on the link to download the Windows Client.



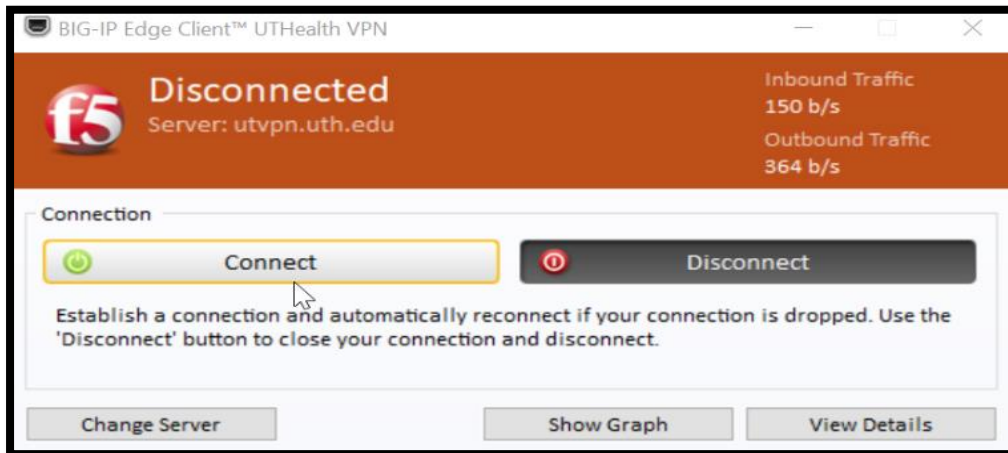
3. Run the downloaded file and click Next, then **Install** as shown below, accepting all defaults and click on **Finish**.



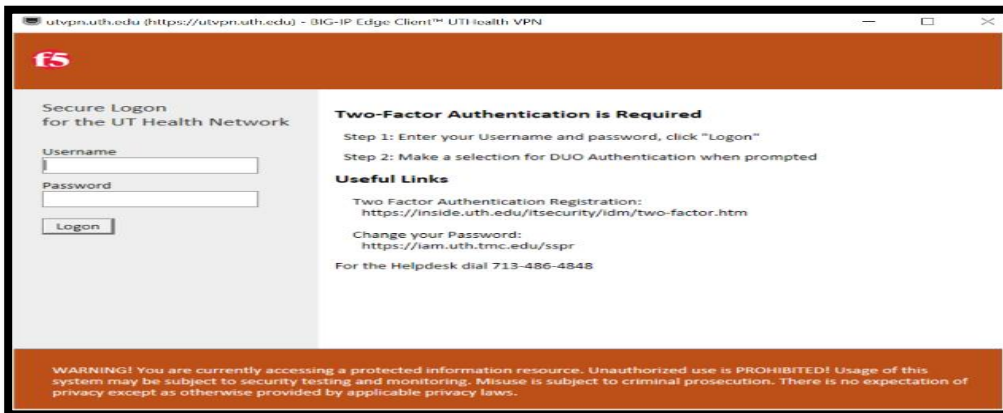
4. After the VPN Client has been installed, click on “**Start**” and locate the “**BIG-IP Edge Client**”



5. Launch the BIG-IP Edge Client, then select **Connect**



6. Enter your UTHHealth credentials, **Username** and **Password** then click Logon



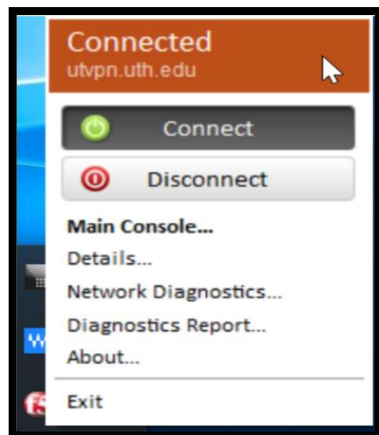
- After you have selected the authentication method and checked “**Remember Me for 180 days**”, a request will be sent to your Mobile device.



- Select “**Approve**” on your Mobile device to allow the F5 client to connect.



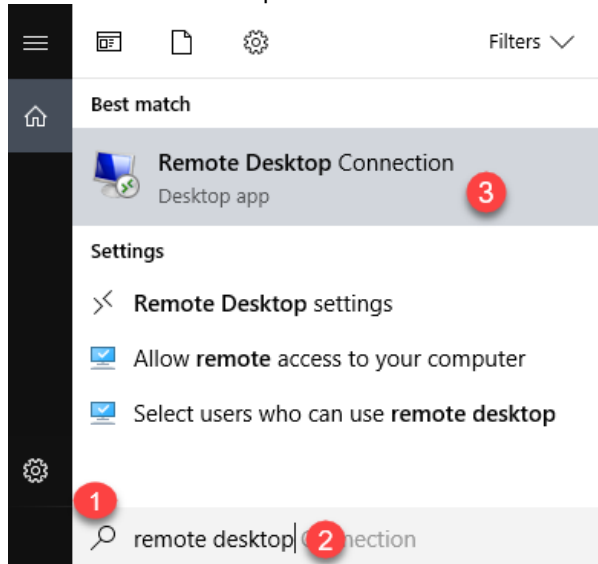
- You can click on the F5 icon on the lower right-hand corner, the Notification Area for additional details about the connection, including **DISCONNECT**.



## PART 2: CONNECTING TO YOUR WORK COMPUTER

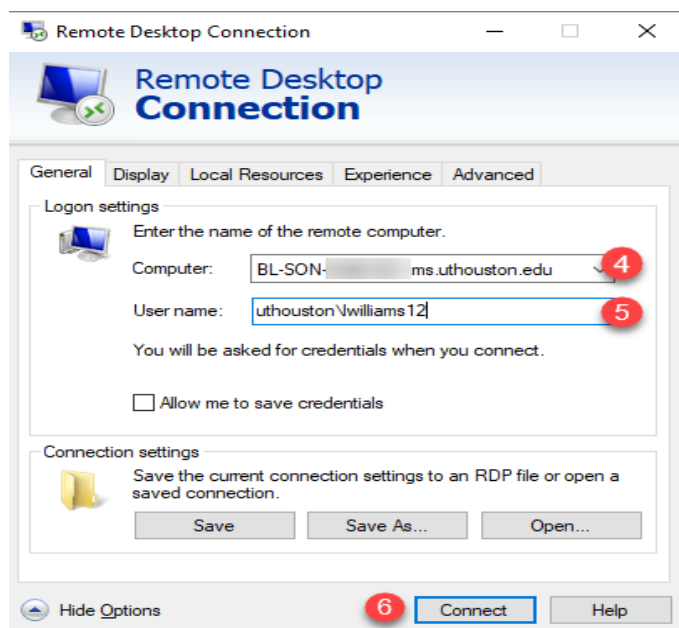
Make a successful BIG-IP VPN client connection, as explained in the instructions in PART 1 above.

1. Click the Window search icon
2. Type "**Remote Desktop Connection**" in the search box
3. Click Remote Desktop Connection from the list



4. On the **Remote Desktop Connection** screen, enter your work computer's name.  
**NOTE:** Your computer's name should have **.ms.uthouston.edu** appended to it.
5. Enter your UTH username. (**uthouston\your username**).

Click the **Connect** button to gain access to your work computer.



### Note Regarding Computer's Name in Remoted Desktop Connection:

If you are on campus, you can locate your work computer's name by following these steps: 1. Click the Windows search icon 2. Type "Computer name" in the search 3. Click the "View your PC name" link 4. Locate your work PC's name to the right of Device Name. BL-SON-...



### CONTACT

Helpdesk 713.486.4848  
CEIRHelp@uth.tmc.edu